

West Shore Lake Pontchartrain

Stakeholder Update

May 26, 2021

Bradley Drouant, PE, PMP
Sr. Project Manager
New Orleans District
U.S. Army Corps of Engineers



®

US Army Corps of Engineers
BUILDING STRONG®



Agenda

- General Status
- Borrow
- Right-of-Entry
- St. James Parish Update

General Status

- Levee construction reaches have been optimized to maximize construction access (shown on following page)
 - ▶ Currently have 13 levee contracts and 1 pump station contract

- Ongoing efforts between the State, our AE contractors, and USACE staff have been taking place over the last month to further optimize designs
 - ▶ These efforts include:
 - Reviewing geotechnical parameters that impact the cross section of the levee
 - Whether “pre-loading” the levee alignment with sand and extending schedule would reduce the levee section and borrow requirements
 - Amount of overbuild included to extend time before future lifts
 - Looking to further optimize pump station capacities and locations

- What isn't being changed in this effort?
 - Level of risk reduction provided from hurricanes remains 100 yr. or 1%
 - Pump stations still being sized for the 10 yr. rain event

- Expect to have better fidelity on schedule impacts late June

General Status (cont.)

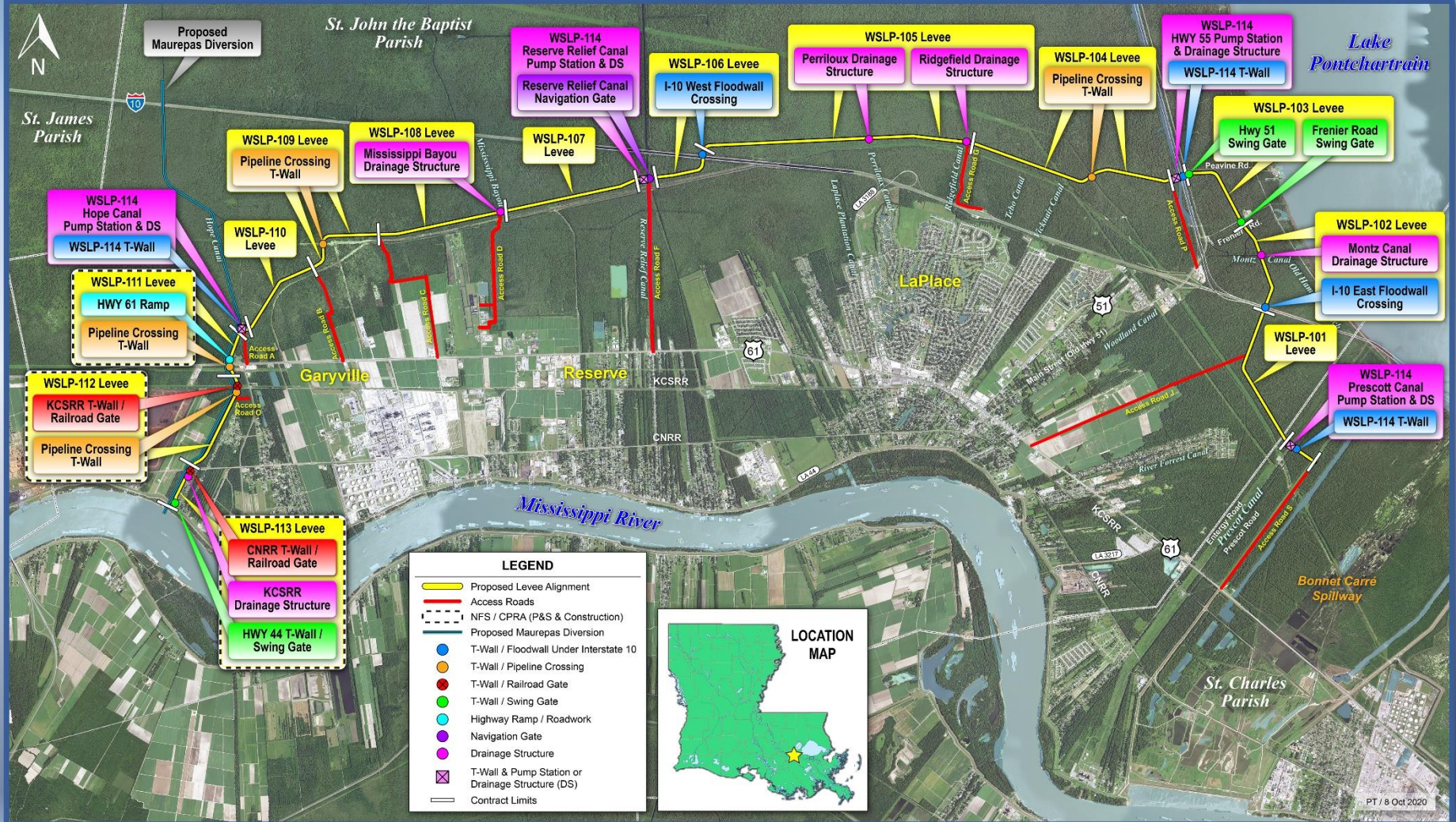
- Access Road J Extension to Test Section WSLP-101 - We have awarded the mod to extend this road.
- WSLP-101:
 - ▶ The formal request for proposal has been sent to the contractor was due May 19, extended to ask questions. This is not expected to delay initiation of work as access road J extension is still required.
- Remaining Access Roads:
 - ▶ Solicitation in CT, expected to be advertised by 6 June 21
 - ▶ Looking to award contract with remaining access roads in early July with Road A, B, C in base contract and S,D,F, & G as options.
- Tree/Clearing Pre-Loading contracts
 - ▶ Depending on the outcome of the optimization efforts, if levee re-designs are required we may move forward with additional contracts to prepare the alignment and perform preparatory work to continue to move the project forward
- Pile Load Test
 - ▶ BCOE review underway
- Right of Entry
 - ▶ CPRA has appropriated much of the alignment
 - ▶ CPRA still working on final LONO across the utility corridor from Air Liquide

Levee Borrow Requirements

- Currently estimating a need of about 7.0M – 9.0M cubic yards of levee material for construction
- Bonnet Carre' Spillway (BCS)
 - ▶ BCS currently has 3.5M CY readily available
 - ▶ Access issues due to high stages on Mississippi River
- Will continue to pursue additional Government Furnished borrow
- Contractor Furnished Borrow List used for levee construction in New Orleans not authorized to be used for the WSLP project
- WSLP approved to use commercially available borrow sources
 - ▶ Sources Sought issued to identify commercial borrow sources
 - ▶ Requirements to become a commercial borrow source were included in the Sources Sought solicitation
 - ▶ Sources Sought closed 5 Nov 2020. Comments provided to all applicants
 - ▶ 5 pits have been pre-qualified for inclusion on the list
 - ▶ No additional pits expected to be qualified in the near-term



West Shore Lake Pontchartrain





WSLP - St James Parish



Questions